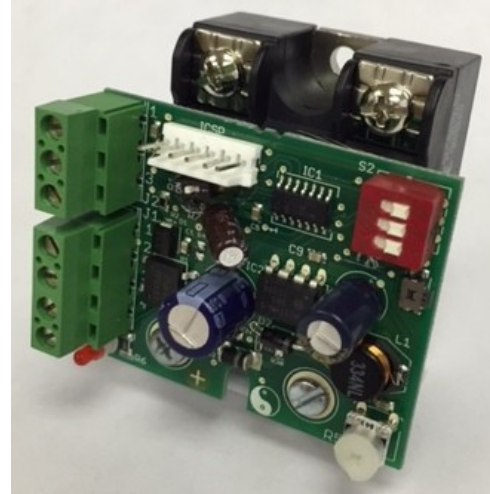


Microprocessor Based SSR Temperature Controller

General Description

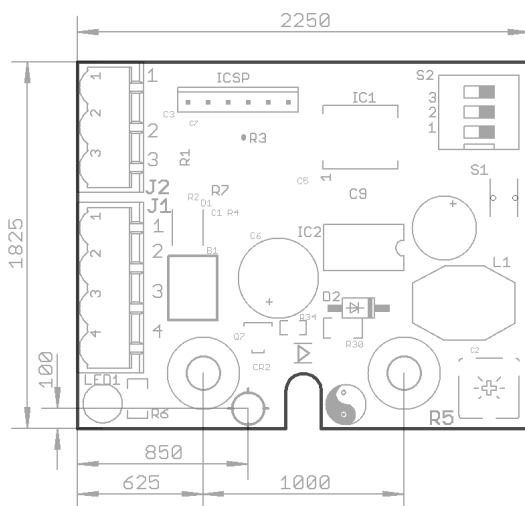
The Series 67 is a Solid State Relay with an integrated microprocessor based temperature controller. Input voltage from 12 to 24 Vac/dc. Output ratings are from 25A to 125A @ 48-530VAC. It can operate "Closed Loop" or "Open Loop". In closed loop the temperature sensing can be a resistive device (PTC, NTC, PRTD), or a 4-20mA input. Other options include on-board or external set potentiometer, ON-OFF or PROPORTIONING output, DIP Switch for user configuration, LED enunciator, and Push Button Switch. The "hockey puck" configuration makes it a small standard package.



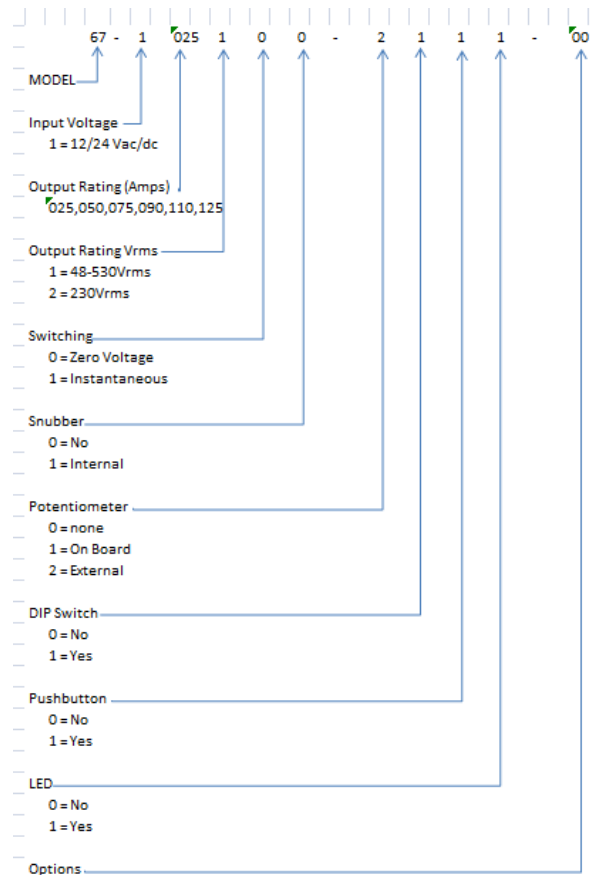
Specifications

- Input Voltage** 12 to 24 Vac/dc +10%, -15% 50/60 Hz
- Output Switching Device Options** See How To Order Section
- Control Mode** On/Off or Proportioning
- Temp Sensors:** PTC, NTC, PRTD, or 4-20mA
- Operating Ambient** 0° to 55°C (32°F to 130°F) standard. Some models available for ambients up to 80°C. 0-90% RH non-condensing.
- Operating Range :** Standard 100-500F. Specify other ranges at time of order.
- Calibration Accuracy:** 1.0F at calibration point +/-4F overall (with a range of 100F -500F).
- Calibration Method:** Fixed, or on board offset potentiometer
- Setpoint Adjustment:** Local or Remote Setpoint adjustment. Consult factory for fixed setpoint adjustment.
- Terminals:** screw terminals
- Sensor Protection:** Open or short will de-energize relay.
- User Interface:** 3 Position DIP Switch, and Push button.

Wiring and Dimensions



How to Order



| Terminal | Function | Terminal | Function |
|----------|-----------|----------|-------------|
| J1-1 | Probe + | J2-1 | Ext. Pot + |
| J1-2 | Probe—Gnd | J2-2 | Ext Pot In |
| J1-3 | Power In | J2-3 | Ext Pot-Gnd |
| J1-4 | Power In | | |