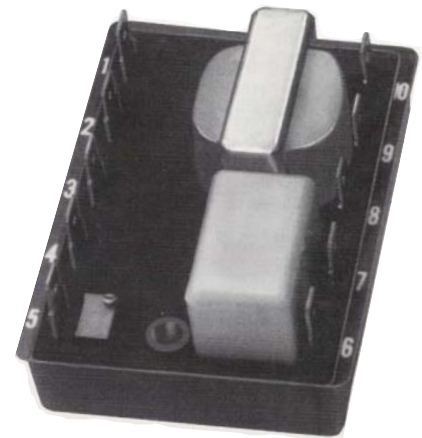


## Sub-panel On/Off and Time Proportioning Temperature Controller

### General Description

Series 3 controllers are encapsulated with a high temperature epoxy - offering protection from moisture, dust, shock and vibration for trouble-free on/off or time proportioning control. Choose from models with either SPDT relay or solid-state relay (SSR) output. 30mA 14VDC and triac drive are also available. Models offered for heating and cooling applications with either local or remote set potentiometer.

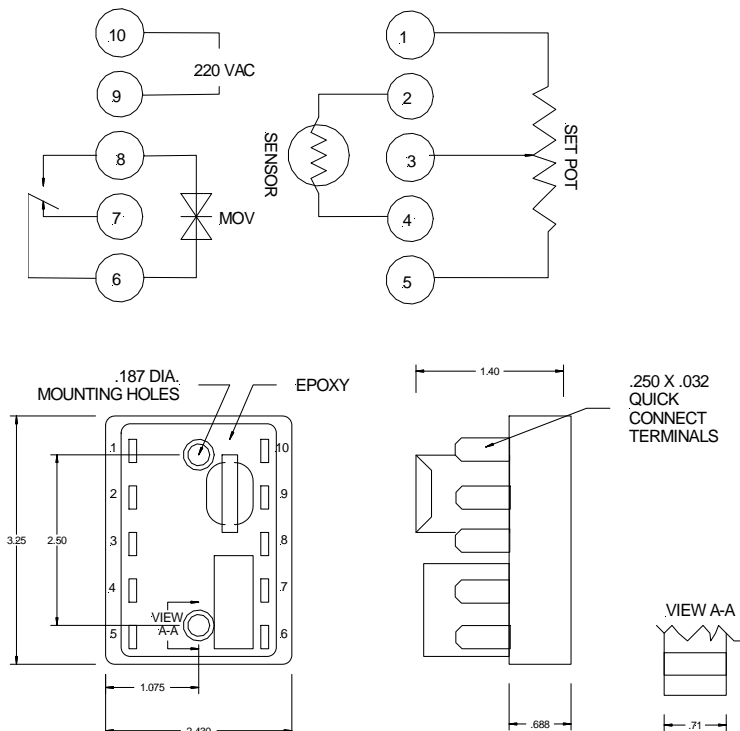
These analog controllers will accept thermistors, RTD's or thermocouples type J. Select standard temperature ranges from -100 to +500 degrees C or specify your own range. Series 3 can be adapted to suit your needs and can be supplied with a handsome 2.25 inch skirted knob and scale calibrated in both degrees C and F. Model 3 comes with optional remote-set potentiometer, which permits mounting the controller away from the front panel to conserve space.



### Specifications

**Line Voltage** 120 VAC +10%, -15% 50/60 Hz (240 or 120/240 VAC field selectable optional) See how to order section  
**Output Switching Device Options** SPDT Relay 10 Amp @ 120 VAC, 5 Amp 240 VAC, SPDT Relay 5 Amp @120 VAC, 1.5 Amp 240 VAC (Pilot Duty Rating 125VA), Triac 2 Amp @ 120 or 240 VAC Solid state Relay Driver (30 MA @ 14 VDC)  
**On/Off Control Mode** Switching Differential (typical) 1/2°C  
**Proportioning Control Mode** Band width (time proportioning) Fixed @ 5° C, Cycle fixed @ 10 seconds  
**Operating Ambient** 0° to 60°C (32°F to 140°F)  
**Set Point Shift with Line Voltage** Less than ± 0.25% of span with 20% change

### Wiring and Dimensions



### How to Order

